

CONSULTANT:

Digitally signed by
David Yung
Date: 2024.06.10 17:00:34 -0400

1726 E ATLANTIC BLVD
POMPANO BEACH, FL 33060

PROJECT NUMBER: CLR2023-03
ATLANTIC ONE

220 MAIN ST
GAINESVILLE, FL 32601

CLIENT: THE COLLIER COMPANIES

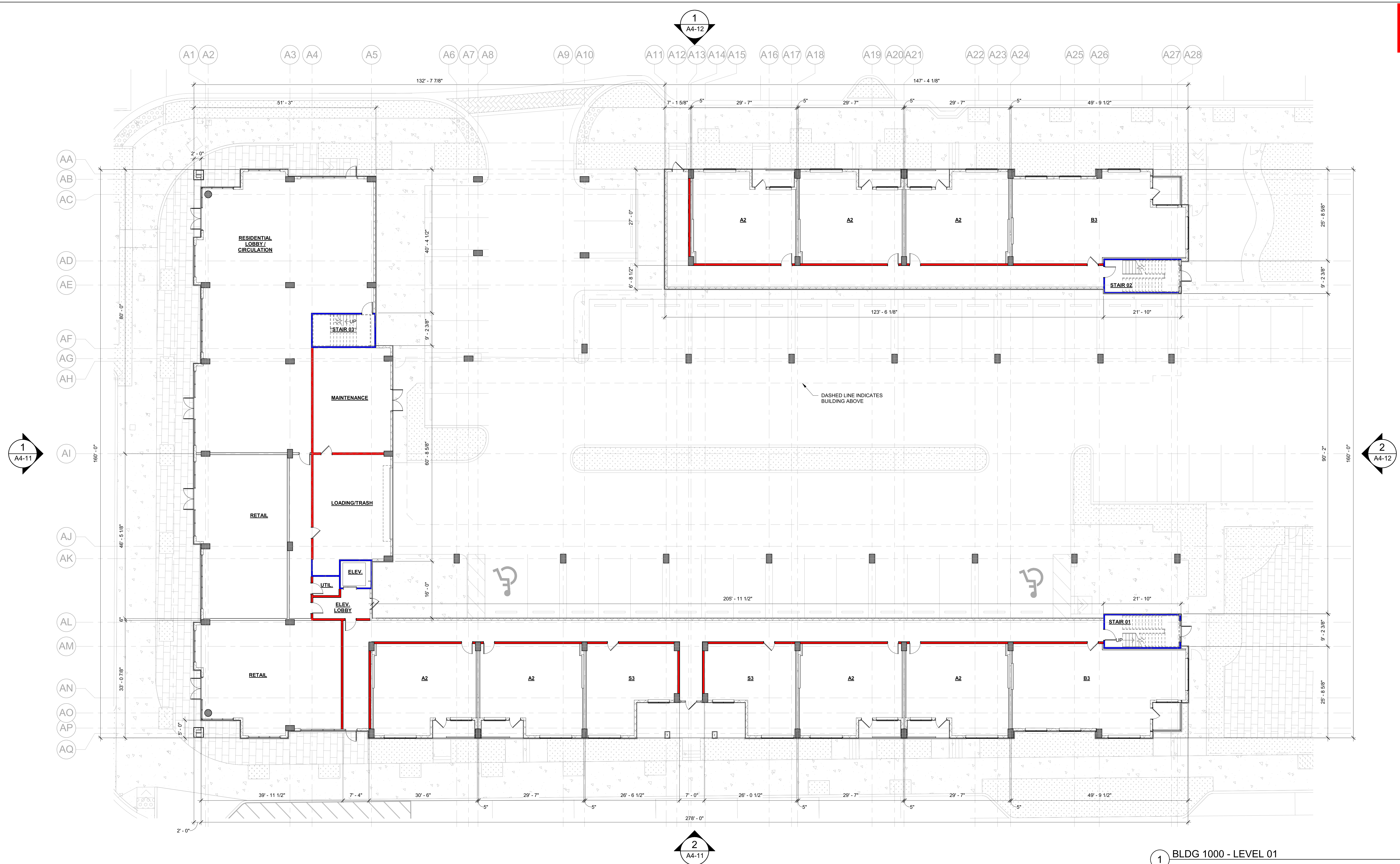
DRAWING RELEASE	DATE
DRC	06/11/2024
SCHEMATIC DESIGN	xx/xx/20xx

TITLE:

BUILDING 1000 -
LEVEL 01

SHEET NUMBER:

A1-11



LEGEND

- CMU WALL
- CAST-IN-PLACE CONCRETE WALL
- PRECAST CONCRETE WALL
- ROOM NUMBER
- RESIDENTIAL UNIT DESIGNATION
- LOCATION OF ENLARGED UNIT PLANS, RCP, AND INTERIOR ELEVATION REFERENCES
- WALL PARTITION
- DOOR CALLOUT
- WINDOW TYPE CALLOUT
- STOREFRONT TYPE CALLOUT

- F.E.C. FIRE EXTINGUISHER CABINET - SURFACE-MOUNT
- F.E.C. FIRE EXTINGUISHER CABINET - SEMI-RECESSED
- F.E.C. FIRE EXTINGUISHER CABINET - RECESSED
- 1-HOUR RATING
- 2-HOUR RATING

GENERAL NOTES

- REFER TO A3 SERIES FOR ENLARGED RESIDENTIAL UNIT PLANS, INTERIOR DOOR TYPES AND LOCATIONS, RESIDENTIAL UNIT RCPs, FINISH FLOOR PLAN, AND FHA PLAN.
- REFER TO SHEET CD SERIES FOR WALL AND FLOOR/CEILING ASSEMBLY TYPES AND ADDITIONAL INFORMATION.
- REFER TO A8 SERIES FOR DOOR SCHEDULES, LEGENDS, AND DETAILS.
- ALL SLOPES TO BE 1/4" U.O.N.
- REFER TO INTERIOR DRAWINGS FOR AMENITY LIGHTING AND FINISH SPECIFICATIONS.
- REFER TO INTERIOR DESIGN DRAWINGS FOR CONDITIONED CORRIDOR FINISHES, CONTROL JOINTS IN CORRIDOR CEILING TO BE 3/8" O.C. MAX. PROVIDE JOINTS BEGINNING AT CORRIDOR INTERSECTIONS UNLESS NOTED OTHERWISE.
- DOOR LOCATIONS NOT DIMENSIONED SHALL BE LOCATED AT MIDPOINT OF WALL OR 4" CLEAR FROM ADJACENT WALL CORNER TO HINGE SIDE, TYPICAL.

KEY PLAN

